

LRA 样品测试说明及结果

测试坐标原点(虚拟焦点坐标 $x=0.0033\text{mm}$, $y=-0.0063\text{mm}$, $z=-0.1154\text{mm}$)

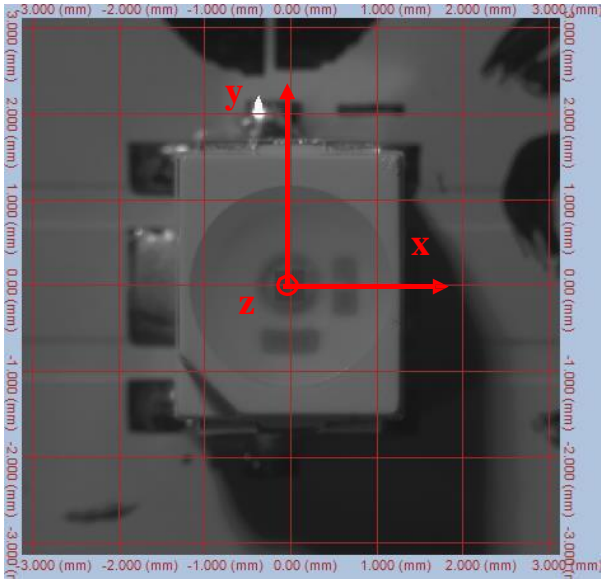


图 1 $I=0^\circ$, $A=0^\circ$

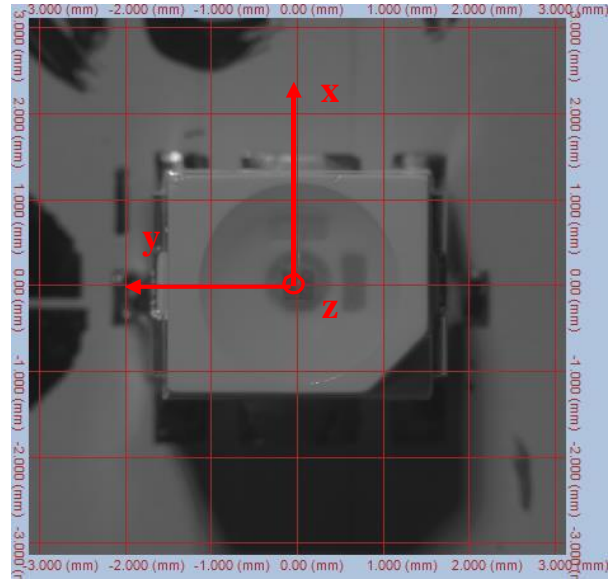


图 2 $I=0^\circ$, $A=90^\circ$

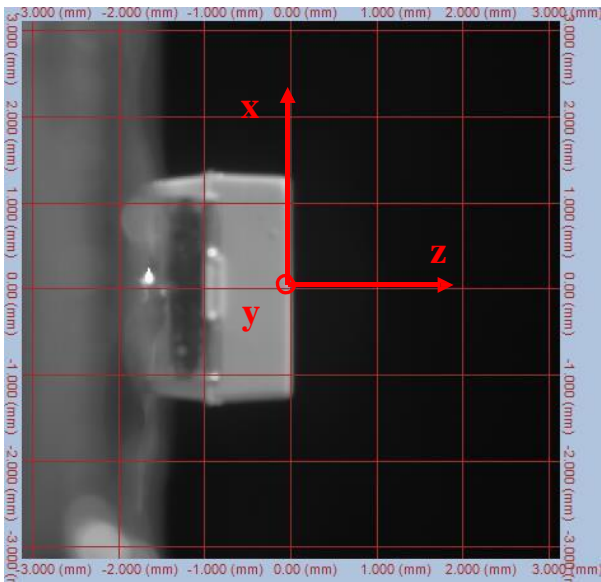


图 3 $I=90^\circ$, $A=90^\circ$

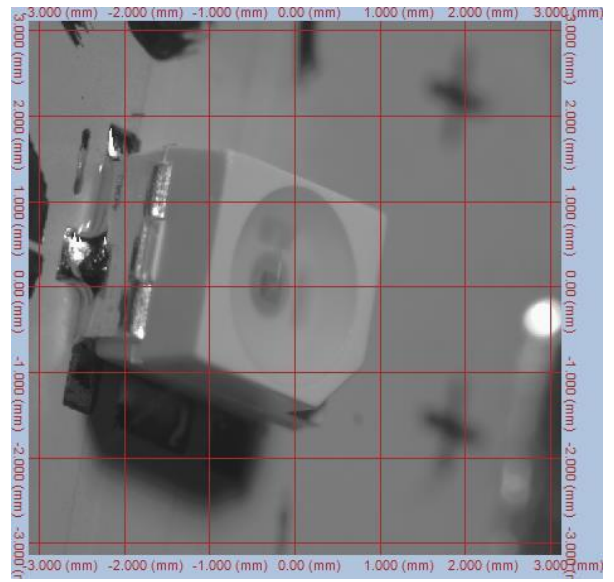


图 4 $I=50^\circ$, $A=75^\circ$

*****报告结束*****